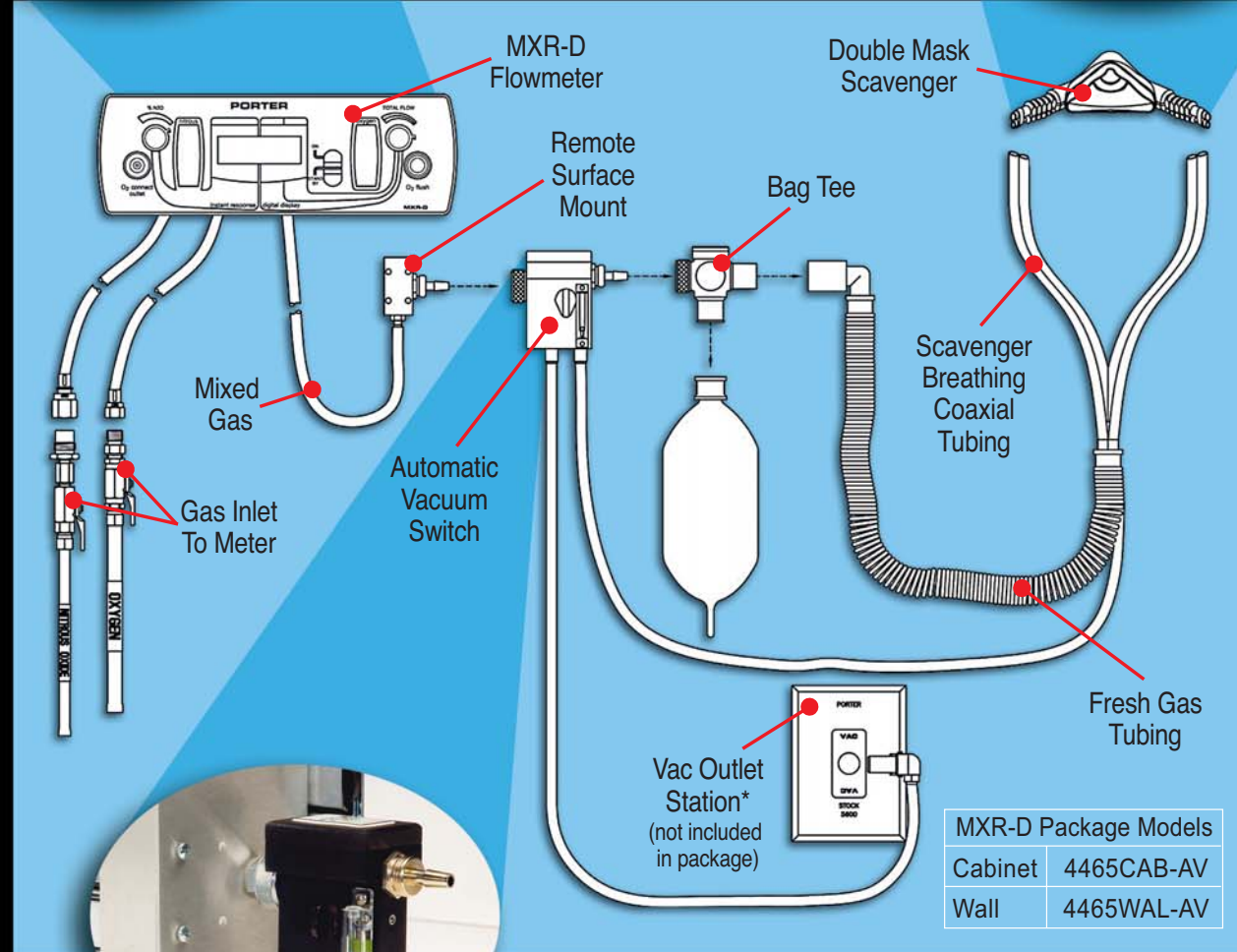


The Porter Nitrous Oxide Sedation System

Better for your patient. Better for your practice. Better for your bottom line



PORTER...

the name to trust in Nitrous

MXR-D DIGITAL FLOWMETER



PORTER

Parker Hannifin Corporation
Porter Instrument Division
 245 Township Line Road
 P.O. Box 907
 Hatfield, PA 19440-0907 USA
 Phone (215) 723-4000
 Fax (215) 723-2199
 www.porterinstrument.com

PORTER MXR-D Precision Nitrous Oxide Sedation
 with visual confirmation of real flow

PORTER MXR-D

The first **electronic flowmeter** providing the assurance of **visual flow confirmation**, as well as **precise digital readouts** of the actual flow and gas mixtures.



Fits or retrofits easily into existing or new cut-out templates



Needle valve technology

- Instantaneous flow of gases at the turn of a knob.
- % N₂O adjustment knob: Controls the % concentration of N₂O. (70% maximum N₂O)

Digital display readout.

- Normal flow display shows the % N₂O on the left side and total flow in L/min on the right side. Additional user conditions such as "O₂ flush" and "Low O₂ flow" will also display.

On/Off switch

- Provides a manual on/off switch with a dual function as the electrical on/off for the digital display.

Total flow adjustment knob

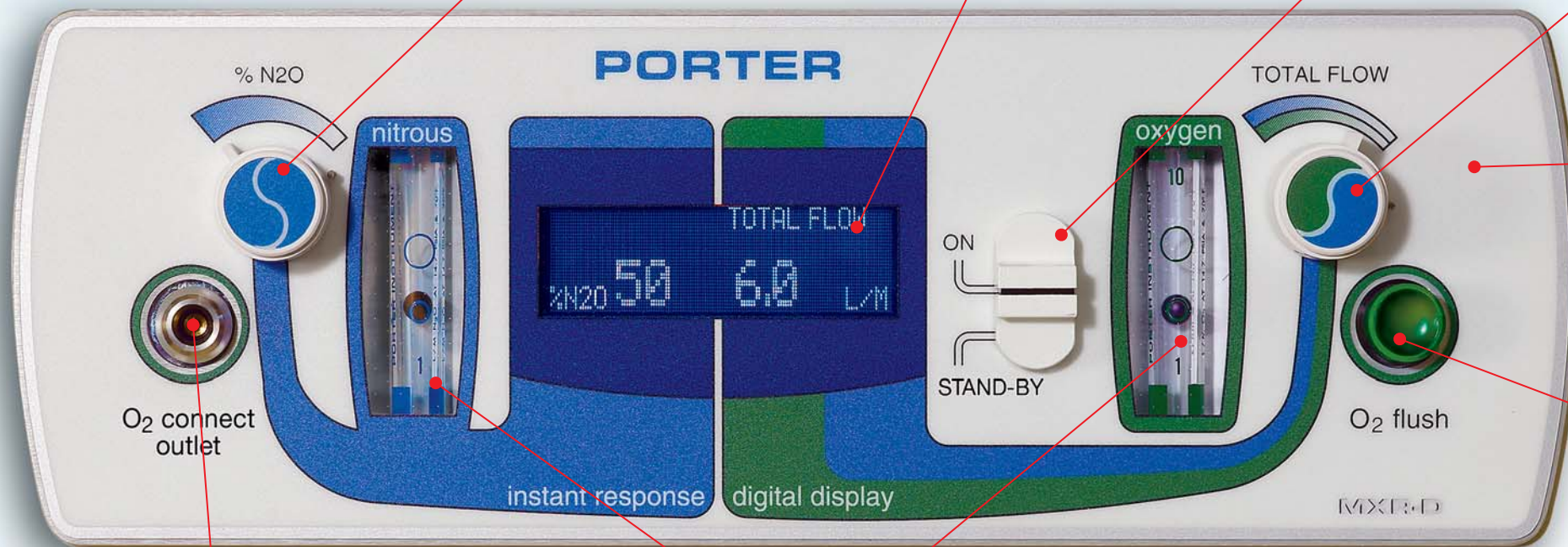
- Controls the combined flow of O₂ and N₂O (or O₂ flow only when the % N₂O knob is set to zero).

Flushmount design contributes to:

- ✓ Ease of use
- ✓ Frequency of use
- ✓ Patient satisfaction
- ✓ Higher case acceptance
- ✓ More "billable" procedures, and
- ✓ Increased sales and gross profits

Oxygen flush button

- Easily accessible button, when pressed, provides high flow of oxygen.



A leap forward in precision and safety from Porter, the leader in N₂O sedation.

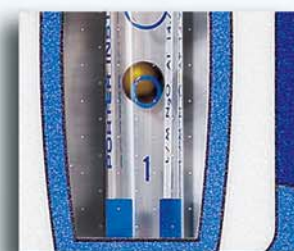
- ✓ Porter's proprietary needle valves deliver instantaneous flow vs. the delay in the electronic valving of digital flowmeters.
- ✓ Because of Porter's control valve design, electrical surges or power outages have no effect on the flow of gas.
- ✓ Audible alarms warn of any interrupted flow conditions. A minimum 30% O₂ flow is always maintained.
- ✓ The MXR-D mounts easily in all cabinetry.
- ✓ Safe, low voltage design (12v DC).
- ✓

Digital Flowmeter Comparison Chart

	Manufacturer		
	Porter MXR-D	Digital Flowmeter "A"	Digital Flowmeter "M"
Digital Display	YES	YES	YES
Calibrated Flow Tubes	YES	NO	NO
Flow control: 0-6 Lpm (time)	< 1 sec	> 6 sec	> 6 sec
Power interruption flow protection	YES	NO	NO
Real time flow assurance	YES	NO	NO
O ₂ quick-connect on meter	YES	NO	NO
Power to the meter	12v DC	110v AC	110v AC

O₂ quick connect

- Facilitates connection of resuscitation equipment to the central system for emergency oxygen. Comes standard with Porter, an upgrade with other meters.



Calibrated Real Flow

Porter N₂O and O₂ indicator tubes

- Calibrated flow tubes provide continuous flow in case of power interruptions.



Unsurssed Scavenger Efficiency



Patented AVS: Automatic Vacuum Switch

"The Porter Cabinet Mounted Flowmeters are so convenient to use, I find myself using nitrous more with my patients. While I can't quantify the percentage nitrous has contributed to our office's 'full appointment book', I do know a cooperative patient allows me to do my best dentistry. Our patients have a relaxing experience instead of a fearful encounter."

Jon Scharf, DDS - Exton, PA

The Porter MXR-D Digital Flowmeter, an integral part of the Porter Nitrous Oxide Sedation System.

Better for your patients.

Better for your practice.

Better for your bottom line.